

## ACHIEVE GREATER OPERATIONAL VISIBILITY WITH SMARTBASE<sup>®</sup>

As an **executive**, the SmartBase<sup>®</sup> reporting feature allows you to see how you're tracking towards your goals and targets. You can take quick actions and delegate tasks across the organisation.

The timeline view in SmartBase<sup>®</sup> allows you as the **team leader** to oversee tasks in real-time based on staff, asset, or location availability including associated qualifications, currencies, skills and certificates.

SmartBase<sup>®</sup> allows you as a **user** to comment and tick off checklists providing real-time collaboration throughout the organisation.

[LEARN MORE](#)

## IMPROVE EFFICIENCY IN YOUR ORGANISATION WITH SMARTBASE<sup>®</sup>

SmartBase<sup>®</sup> provides you with the ability to take action in real-time by showing a live, visual representation of your resources such as people, assets and locations. It is a modern, collaborative solution with all the security features demanded by high compliance environments.



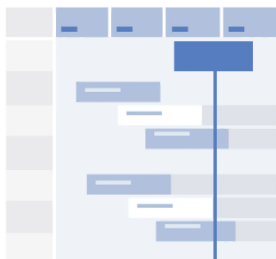
### Efficiency using event templates

Create unlimited tailored templates to meet **your** precise requirements. Retain key elements including event durations and associated resources.



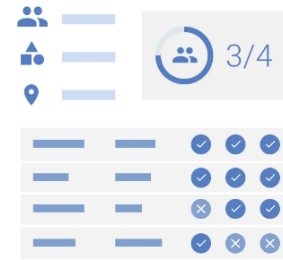
### Maintain informed awareness

Control **your** notification preferences with instantaneous updates. Each distinct event offers detailed traceability, ensuring comprehensive oversight and management.



### Clear timeline perspective

Improve **operational visibility** with single or split views. Ensure alignment of the right person to the right place at the right time to maximise safety and efficiency.



### Streamlined planning approach

Oversee diverse teams and projects in a **single platform**. Allocate resources to specific events and monitor their progress as structured work packages.



**Visualise work pipelines & deconflict**



**Secure, real-time collaboration**



**Centralise people, assets & locations**



**Template work packages & save time**

[LEARN MORE](#)